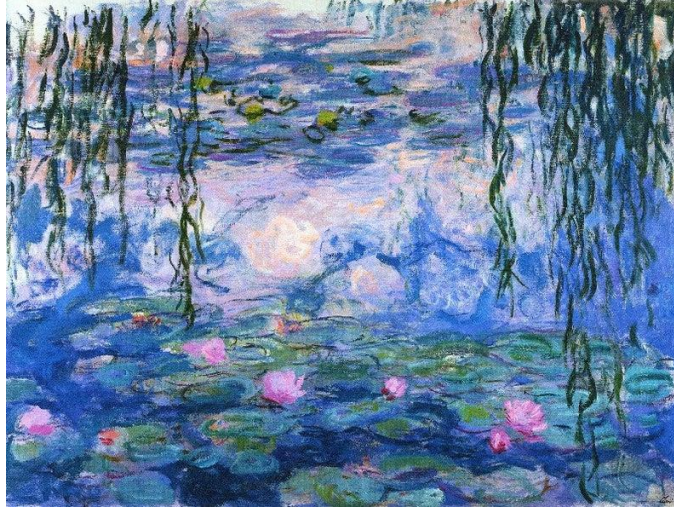


Moments of Beauty

Week 2 - Beauty in Cultivated Gardens

Wednesday, September 16



“Water Lilies Nymphéas” by Claude Monet (circa 1915)

This is one of the famous impressionistic paintings from Giverny, France. The French artist designed the beautiful lily ponds after Japanese water gardens. Of critical importance to Monet was the changing light on the water and he worked in all different light to get different effects.

“The Lord is my light and my salvation – whom shall I fear? The Lord is the stronghold of my life – of whom shall I be afraid? When evil men advance against me to devour my flesh, when my enemies and my foes attack me, they will stumble and fall. Though an army besiege me, my heart will not fear; though war break out against me, even then will I be confident. One thing I ask of the Lord, this is what I seek: that I may dwell in the house of the Lord all the days of my life, to gaze upon the beauty of the Lord and to seek him in his temple.” Psalm 27:1-4

Beauty draws us in. In the case of this painting, the water gardens were created with texture and beauty so the essence of them could be captured on canvass. It was beautiful in person and in repetition and reflection. When we intentionally create something of beauty it gives us hope. It encourages us to be confident in God’s salvation for us. Even us.